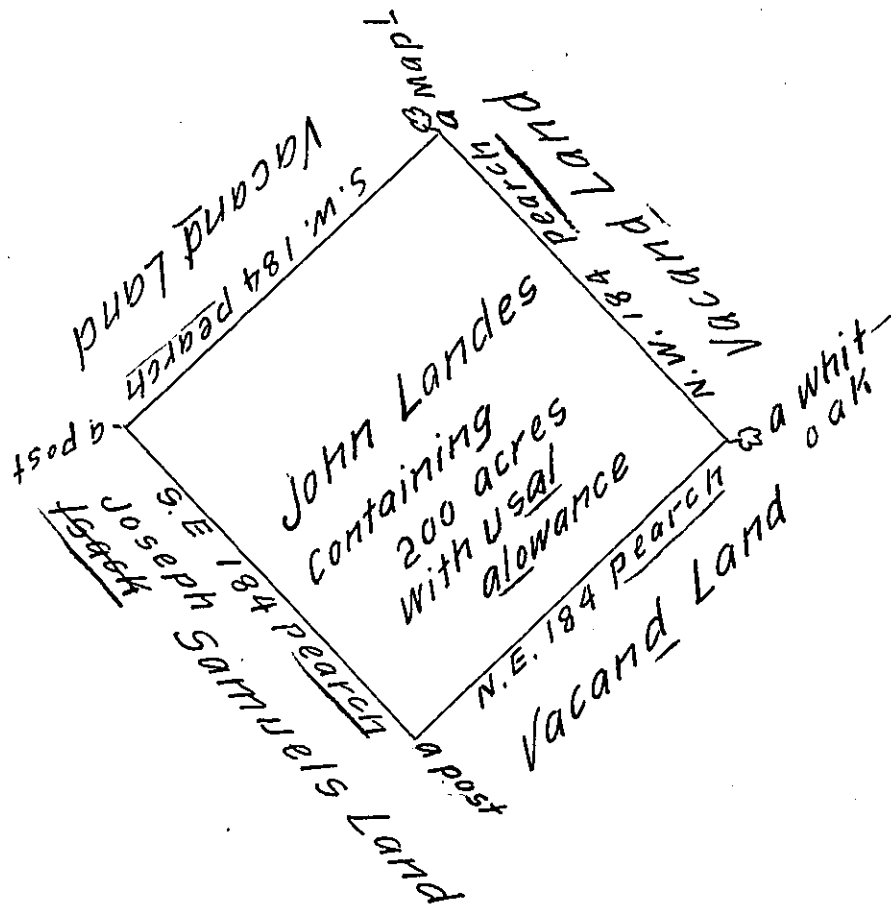


N^o 36



Begining at a post being a corner of ~~Isack~~ ^{Joseph} Samuels land then northeast one hundred and eighty four pearches by vacand land to a whit-oak then northwest one hundred and eighty four pearches by vacand land to a ~~whit-oak~~ ^{map} then southwest one hundred and eighty four pearches by vacand land to a post then southeast one hundred and eighty four pearches to a post then southeast one hundred and eighty-four pearches by Isack Samuels land to the place of begining containing two hundred acres with usual allowance lying upon Sockunk in Bucks County surveyed the 6th of the 9th month in the year 1733. By me

John Chapman

$$\begin{array}{r}
 184 \\
 184 \\
 \hline
 736 \\
 1472 \\
 184 \\
 \hline
 33856 / 21 \\
 12
 \end{array}$$

IN TESTIMONY that the above is a copy of the original remaining on file in the Department of Internal Affairs of Pennsylvania, made conformably to an Act of Assembly approved the 16th day of February, 1833, I have hereunto set my Hand and caused the Seal of said Department to be affixed at Harrisburg, this twelfth day of July 190.

Henry Howell
 Secretary of Internal Affairs.